

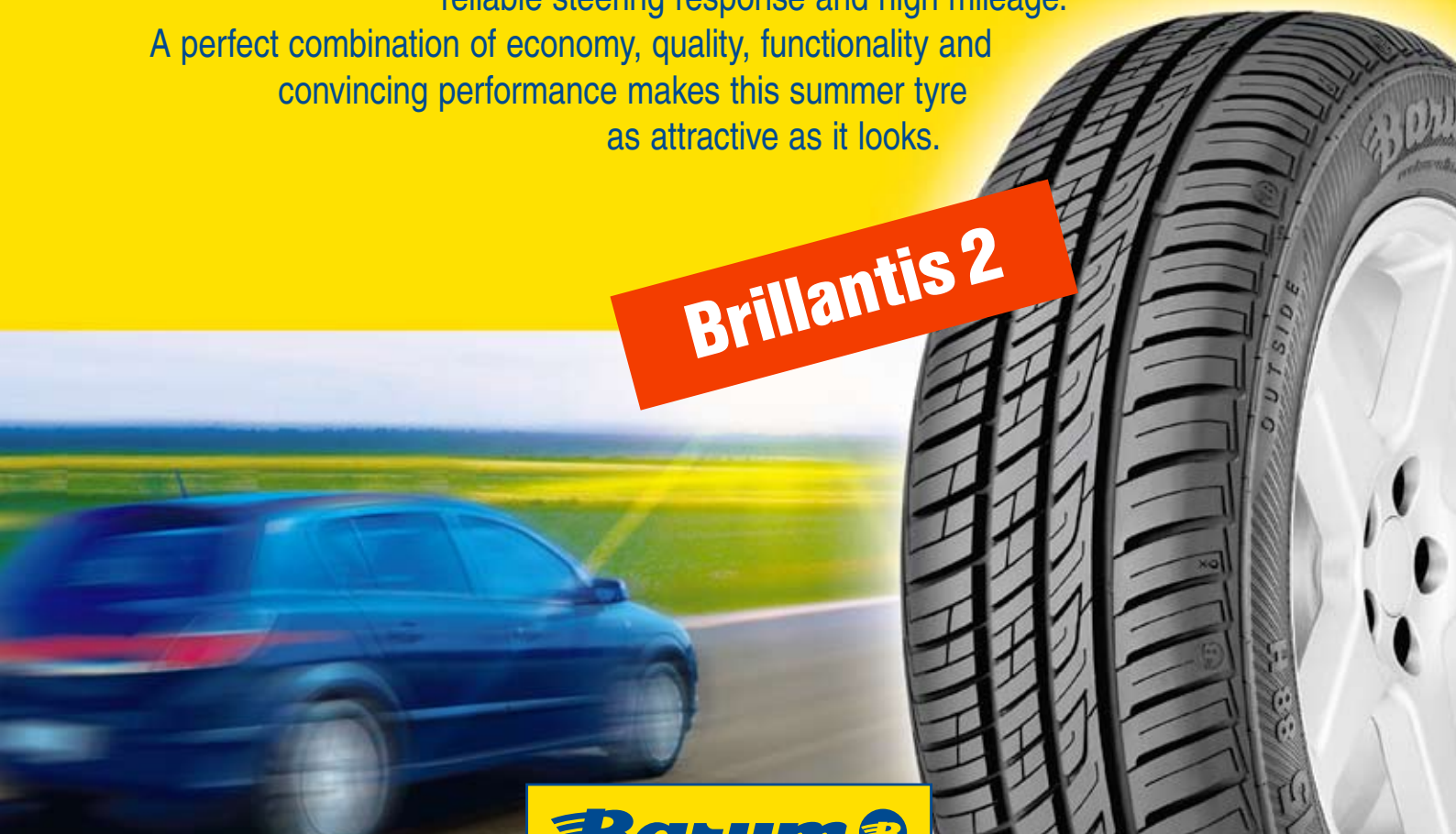
# Good all round! And value for money.

The fact that this summer tyre moves as smoothly as its name suggests is down to its asymmetrical tread pattern concept and its flat contour.

The Brillantis 2 is good all round – with its balanced driving characteristics, reliable steering response and high mileage.

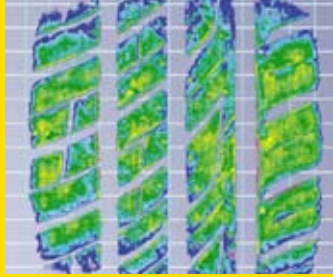
A perfect combination of economy, quality, functionality and convincing performance makes this summer tyre as attractive as it looks.

**Brillantis 2**



# The Brillantis 2 – performance, steering precision, long service life.

## Mileage performance



### Feature

Flat contour

### Effect

More even ground pressure distribution

### Benefit

High mileage performance

## Driving performance



### Feature

Asymmetrical tread pattern with solid outer shoulder

### Effect

Increased lateral stiffness in the outer shoulder lugs

### Benefit

Greater safety during critical steering manoeuvres

## Safety



### Feature

Combination of continuous lateral grooves on the inner side with narrow sipes in the lugs

### Effect

Unimpeded water flow and increased number of gripping edges

### Benefit

Greater aquaplaning safety and shorter braking distances on wet roads

## Noise



### Feature

Reduced groove width in the shoulder section

### Effect

Reduced volume of lateral grooves

### Benefit

Low rolling noise

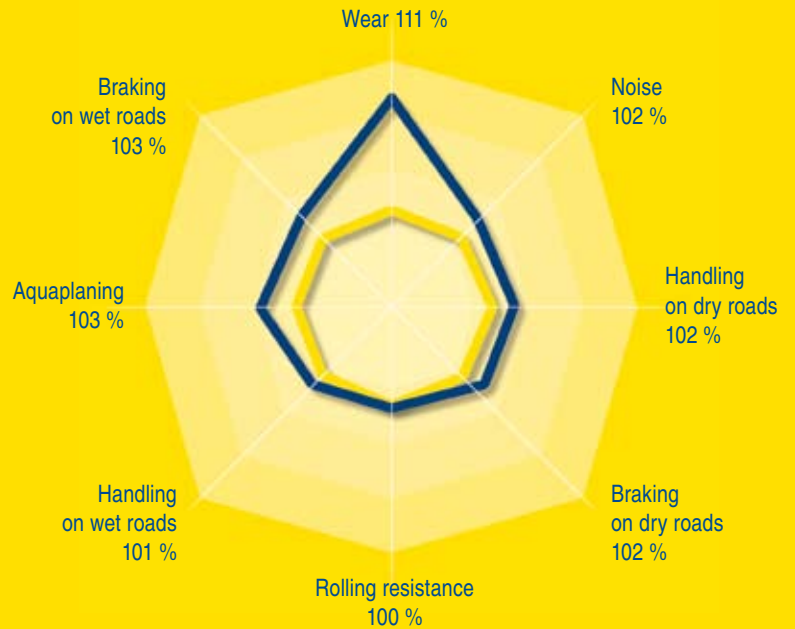
## Series Rim Size SI LI Type

Series	Rim	Size	SI	LI	Type
80	13"	145/80 R 13	75	T	
		155/80 R 13	79	T	
70	13"	145/70 R 13	71	T	
		155/70 R 13	75	T	
		165/70 R 13	79	T	
		165/70 R 13	83	T	XL
		175/70 R 13	82	T	
	14"	165/70 R 14	81	T	
		165/70 R 14	85	T	XL
		175/70 R 14	84	T	
		175/70 R 14	88	T	XL
65	13"	155/65 R 13	73	T	
		165/65 R 13	77	T	
	14"	165/65 R 14	79	T	
		175/65 R 14	82	T	
		175/65 R 14	86	T	XL
	15"	175/65 R 14	82	H	
		185/65 R 14	86	T	
		185/65 R 14	86	H	
		185/65 R 15	88	T	
		185/65 R 15	88	H	
60	14"	195/65 R 15	91	T	
		195/65 R 15	95	T	XL
		185/60 R 14	82	T	
	15"	185/60 R 14	82	H	
		195/60 R 14	86	H	
	15"	185/60 R 15	84	H	
		185/60 R 15	88	H	XL

LI = Load Index  
SI = Speed Index  
XL = reinforced

Speed Index:  
T = up to 190 km/h (118 mph)  
H = up to 210 km/h (131 mph)

## Performance comparison



■ Brillantis 2  
□ Brillantis (= 100%)

**Bauum**

Good tyres. Good deal.